



PRODUCT CATALOGUE

Table of CONTENTS

— 03

ABOUT US

— 04

OUR MISSION

— 05

THE NEW ERA OF
CONSTRUCTION

— 07

OUR PROJECTS

— 09

PRODUCTS

— 12

OUR CUSTOMER
FAMILY

— 13

CONTACT US

About Us

Alambanaa is a modern-forward manufacturer of high-quality PUF Panels, redefining the standards of infrastructure solutions. Unlike traditional manufacturers, we operate as a complete one-stop destination—supporting clients from concept and design to final construction. With our upcoming innovations in prefabricated housing, we are set to bring a true revolution to the construction industry.



Our Core Values :

Quality & Reliability-
Structures that stand strong for years, giving you peace of mind.

Innovation & customisation-
Tailored solutions designed to meet your unique needs.

Customer Commitment-
Your satisfaction is our greatest rewards.

Sustainability & Responsibility-
Efficient, safe and eco friendly solutions for better tomorrow.

Our promise: To transform your vision into safe, durable and inspiring spaces that you can trust



Guided by a young yet strongly value-driven leadership, Alambanaa blends modern technology with deep-rooted principles, ensuring reliability, transparency, and long-term trust. What truly sets us apart is our in-house team of skilled architects, enabling us to offer tailored design support and seamless execution under one roof.

Our Mission

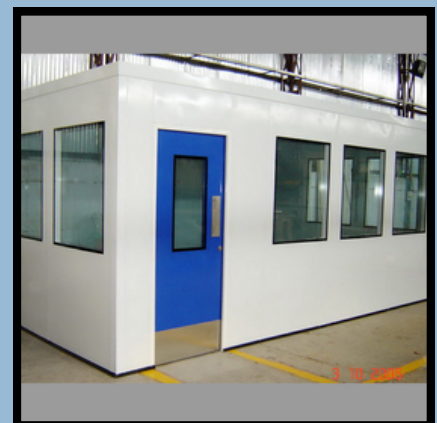


We aim to giving the world a new, faster, cheaper and sustainable architecture to protect our mother Earth. We provide an answer that is the cheapest of all . The new era of sustainable architecture where the houses that are built have zero energy cost. We should also make them with zero emission rate using PUF panels instead of traditional concrete and RCC.

Eco friendly spaces, built to last

The company believes in achieving total customer satisfaction and is committed to delivering products at the right specifications, at the right price, and at the right time.

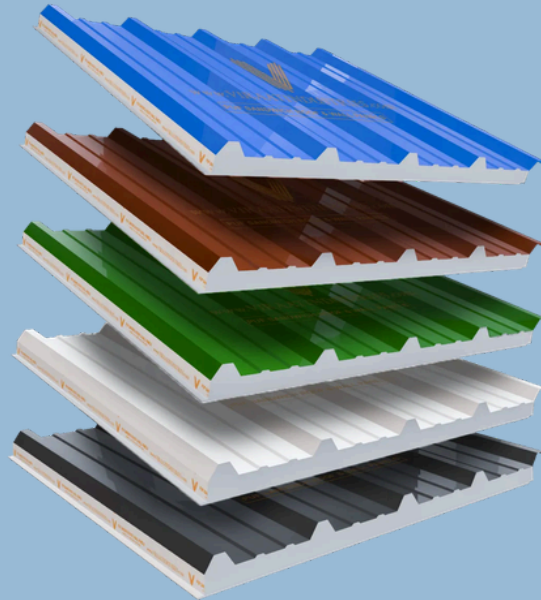
We specialize in providing fully customized solutions for Cold Storage and Clean Rooms, offering equipment, design, and installation services tailored to client needs.



PUF PANELS



THE NEW ERA OF CONSTRUCTION



"Where modern speed meets timeless comfort — PUF panels lead the way."



PUF panel houses represent a modern and innovative approach to building. PUF, or Polyurethane Foam panels, are factory-made sandwich panels that combine steel or aluminum sheets with an insulated foam core. These panels are lightweight, strong, and thermally efficient, making them an attractive alternative to traditional brick-and-cement walls.

With we as humans destroying our mother nature everyday for our own good; the least we can do is minimize the damage done. The carbon emission because of RCC and cement is really high and contributing towards global warming. And with the limmited stores of limestone and gypsum, PUF panels are our alternative of tomorrow.

"Nature meets modern living "



Nature's Destroyer

Cement sheets absorb and transmit heat.

Cement sheets are bulky and increase the load on structures.

Cement sheets require more structural support and labor for installation.

Cement sheets don't save on cooling/heating costs.

Cement sheets are rigid and not as versatile in modular or prefab construction.

Has a high rate of carbon emission which is a leading cause of Global Warming



Nature's Saviour

PUF panels have a foam core that provides excellent insulation → cooler in summer, warmer in winter.

PUF panels are lightweight, reducing foundation cost and making installation easier.

PUF panels are prefabricated and can be quickly assembled.

PUF panels reduce electricity bills due to thermal insulation

PUF panels allow easy expansion, cutting, and modular design.

It is eco friendly, sustainable and a never dying resource.

"Weather proof your dreams"

Tissue culture Lab was constructed by us for Rise N Shine Pvt Ltd.

Place: Theur, Pune
Rise N Shine company

Tissue culture lab: full structure



We built an Operation Theatre at Dr D.Y. Patil Multispecialty Hospital using our PUF Panels.

Place: D'PU SUPER SPECIALTY HOSPITAL

(A Unit of Dr. D.Y. Patil Medical College, Hospital & Research Centre)

PIMPRI, PUNE

OT room (Operation theater).

: full structure



Helipad Waiting Room

was Constructed by
Fusion India at Shirdi
Airport.

Place: Kokamthan,
Shirdi

Helipad Waiting room :
wall, full structure.



Roofing was done with PUF
Panel at Don Bosco High School.

Place: DON BOSCO school, Mumbai

Roofing.puf panel.

***As per Clients requirement we provide customized flooring standards.**

Products we offer



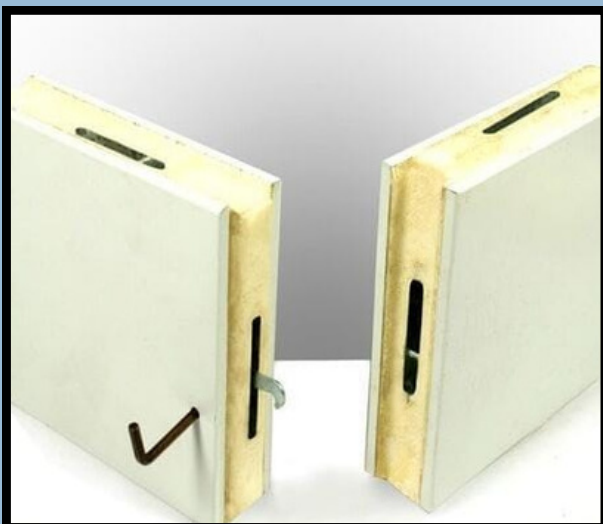
CLEAN ROOM



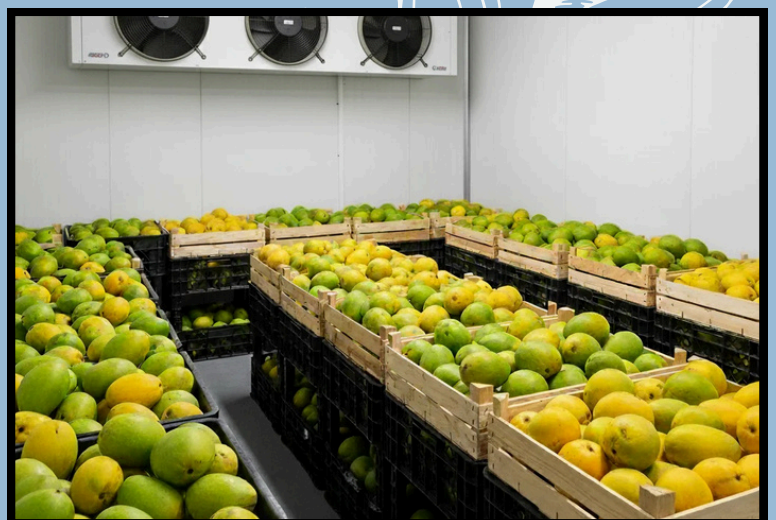
MACHINE ROOM



MUSHROOM PLANT



PUF INSULATED PANELS WITH
CAMLOCK SYSTEM



RIPENING CHAMBER

Products we offer



MOBILE TOILETS



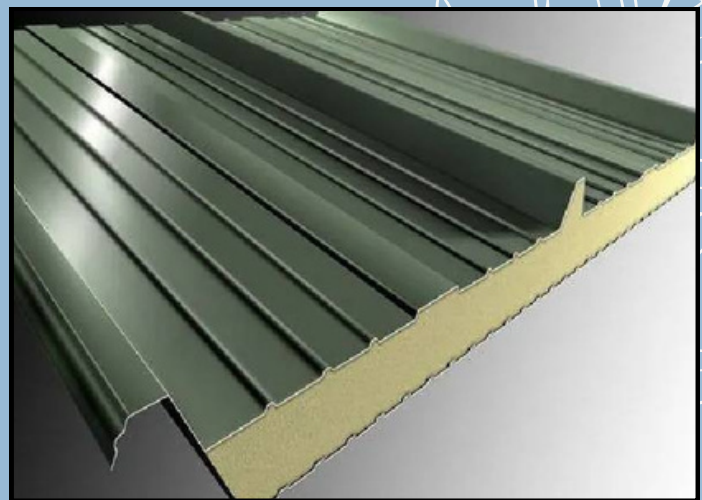
SERVICE DOORS



VIEW GLASS



COLD STORAGE



SS PUF INSULATED SANWICH ROOFING PANEL

Products we offer



PUF INSULATED
ROOFING

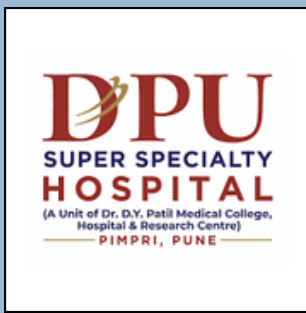


WALK IN STABILITY
CHAMBER



EMERGENCY EXIT DOORS

“TRUSTED BY CLIENTS ACROSS INDUSTRIES”



Rise N Shine Pvt Ltd,
Theur, Pune

Shrere Warna Shah Dudh Utpaak Prakriya
Sangh Ltd, Warnanagar, Kolhapur

Indus International School
Pvt Ltd, Pune

Jiaying Uni-Pol Vaccum
Casting (1) Pvt Ltd, Pimple
Jagtap, Shirur, Pune

Soex India Pvt Ltd,
Nariman Point, Mumbai

Nipro India Corporation
K&T Biology, Solu

Shree Ganesh Bakery
Nandini Pvt Ltd, Kolhapur

Swaraj India Agro Ltd,
Nimbore, Gaon, Phaltan

TATA Motors (Jaguar
Plant) Ltd, Pimpri, Pune

Indian Navy,
Vishakapatnam

Revandarsh Agro Tech,
Tasagaon

BASF Coatings India Pvt Ltd

Reynold Pvt Ltd, Haridwar,
Uttarakhand

Siddeshwar Precoiling
Sonai, Tasagaon

KEM Hospital Research
Centre, Pune

Srushti Agro Pvt Ltd, satara

Dr D.Y. Patil Medical College,
Hospital & Research
Centre, Pimpri, Pune

Cheliram Hospital- Diabetes
care & multispeciality,
Bavdhan, Pune

S.L. Agro Foods, Kurali,
Chiakan

Industrial Refrigeration Pvt
Ltd, Nariman Point, Mumbai

Takur Agro Pvt Ltd, Alandi



CONTACT US



+91 9922212875



info@alambanaaindustries.in



[alambanaaindustries](https://www.instagram.com/alambanaaindustries)



[Alambanaa Industries](https://www.facebook.com/AlambanaaIndustries)



www.alambanaaindustries.in



Gat No 158, Near Dwarka City Ambethan
Road, Chakan, Tal. Khed, Mahalunge Ingale,
Pune, PIN - 410501, Maharashtra, India.



"Luxury that doesn't break the bank"